

Takım Kodu
Ordering Code
Bestell-Bezeichnung

Stok
Stock
Lager

Takım Ölçüleri (mm)
Dimension (mm)
Abmessung (mm)

Kullanılacak
ATUM Ölçüsü
Compatible
ATUM Diameter
Verwendeter Vollbohrer

Yedek Parçaları / Spare Parts / Ersatzteile

Kesici Uç
Insert
Wendeschneidplatte

Sıkma Vidası
Screw
Schraube

Tork Anahtar
Torx Key
Torx-Schlüssel

Montaj Vidası
Mounting Screw
Befestigungsschraube

Montaj Vida Anahtar
Mounting Screw Key
Befestigungsschraub

DB DCON LB LF ATUM Ø



ADCR-120-VB1103	●	32	12	10	22	12.5
ADCR-125-VB1103	●	32.5	12.5	10	22	13
ADCR-130-VB1103	●	33	13	10	22	13.5
ADCR-135-VB1103	●	33.5	13.5	10	22	14
ADCR-140-VB1103	●	34	14	10	22	14.5
ADCR-145-VB1103	●	34.5	14.5	10	22	15
ADCR-150-VB1103	●	35	15	10	22	15.5 -16
ADCR-155-VB1103	●	35.5	15.5	10	22	16.5
ADCR-160-VB1103	●	36	16	10	22	17
ADCR-165-VB1103	●	36.5	16.5	10	22	17.5
ADCR-170-VB1103	●	37	17	10	22	18
ADCR-175-VB1103	●	37.5	17.5	10	22	18.5
ADCR-180-VB1103	●	38	18	10	22	19
ADCR-185-VB1103	●	38.5	18.5	10	22	19.5
ADCR-190-VB1103	●	39	19	10	22	20
ADCR-195-VB1103	●	39.5	19.5	10	22	20.5
ADCR-200-VB1103	●	40	20	10	22	21
ADCR-205-VB1103	●	40.5	20.5	10	22	21.5
ADCR-210-VB1103	●	41	21	10	22	22
ADCR-215-VB1103	●	41.5	21.5	10	22	22.5
ADCR-220-VB1103	●	42	22	10	22	23
ADCR-225-VB1103	●	42.5	22.5	10	22	23.5
ADCR-230-VB1103	●	43	23	10	22	24
ADCR-235-VB1103	●	43.5	23.5	10	22	24.5
ADCR-240-VB1103	●	44	24	10	22	25
ADCR-245-VB1103	●	44.5	24.5	10	22	25.5
ADCR-250-VB1103	●	45	25	10	22	26
ADCR-255-VB1103	●	45.5	25.5	10	22	26.5
ADCR-260-VB1103	●	46	26	10	22	27
ADCR-265-VB1103	●	46.5	26.5	10	22	27.5
ADCR-270-VB1103	●	47	27	10	22	28
ADCR-275-VB1103	●	47.5	27.5	10	22	28.5
ADCR-280-VB1103	●	48	28	10	22	29
ADCR-285-VB1103	●	48.5	28.5	10	22	29.5
ADCR-290-VB1103	●	49	29	10	22	30
ADCR-295-VB1103	●	49.5	29.5	10	22	30.5
ADCR-300-VB1103	●	50	30	10	22	31

VBM. 1103.. 4008-M2.5x6 80-T08 AAV-14-M5x14 AAL-03-3

R: Sağ / Right / Rechts L: Sol/Left/ Links

● Stokta / In Stock / Auf Lager ○ Stokta Yok / Non Stock Item / Kein Lagerartikel, Lieferzeit auf Anfrage

Sipariş Örneği/Ordering Example/Bestellbeispiel

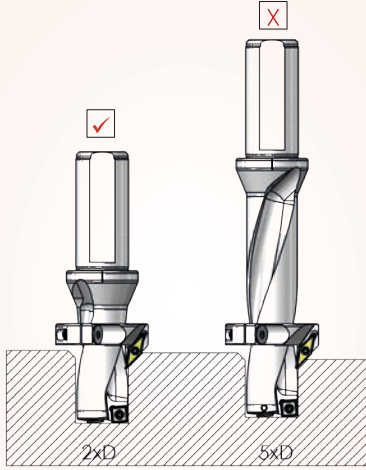
1 ad./pcs./stück ADCR-120-VB1103

Takma Uçlu Matkap Kullanım Kılavuzu : S 329 / User's Guide For U-Drills : P 329

S.330 / Bedienungsanleitung für Vollbohrer

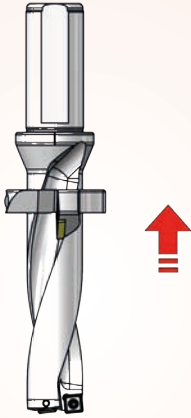
Tavsiye Edilen / Recommended / Empfehlung

A



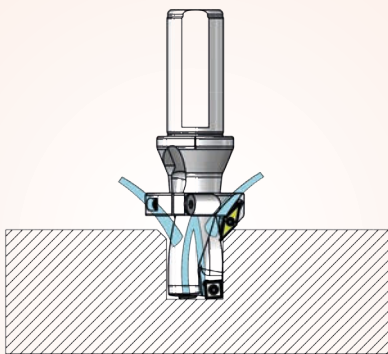
Mümkünse, her zaman kısa bir delme takımı kullanın. Değilse, titreşimi en aza indirmek için kesme hızını azaltın.
If possible, use it always short drilling tools. Otherwise, reduce your speeds to minimize vibration.
Bitte möglichst kurze Bohrwerkzeuge verwenden. Sollte dies nicht möglich sein, reduzieren Sie bitte die Geschwindigkeit, um Vibrationen zu vermeiden.

B



Mümkün olduğunca pah kırma halkasını shaft kısmına yakın montaj yap.
Get close to the mounting shaft of the chamfering ring as possible.
Befestigen Sie den Fasring möglichst nah am Schaft.

C



Daha iyi uç ömrü için harici soğutucu ve matkap ucu iç soğutucu uygulamak.
Apply external cooling and internal coolant drill for a better life for inserts.
Setzen Sie innere und äußere Kühlung ein, um die Standzeit der Wendepaltten zu erhöhen.

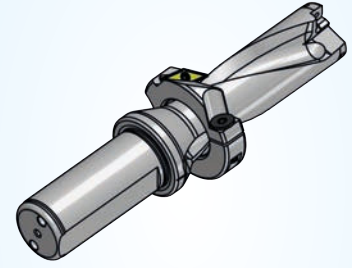
Montaj Şekli / Mounting System / Montage-Hinweise

1



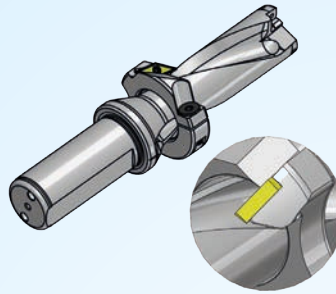
Matkap gövdesi üzerine pah kırma halkasını takın.
Put the chamfering ring to drill body.
Schieben Sie den Fasring auf den Bohrkörper.

2



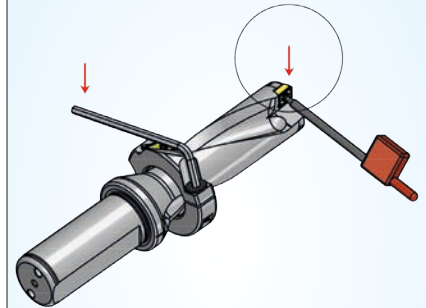
İstenilen konuma pah kırma halkasını kaydırın.
Please slide chamfering ring to the desired position.
Befestigen Sie den Fasring an der gewünschten Position.

3



Pah kırma halkasını talaş akışına mani olmayacak şekilde helis başlangıcına denk getirin.
Please keep chamfering ring position which will not resist to fluiding chips and try to be equal to the helix start points.
Positionieren Sie den Fasring bündig mit der Bohrschnecke um einen problemlosen Späneabtransport zu gewährleisten.

4



Pah kırma halkasını sıkın ve matkapin uçlarını takın.
Tightening the chamfering ring and put the drill insert.
Den Fasring festziehen und die Bohr-Wendepaltten einbauen.

Pah kırma halkasının doğru montaj şekli.
Proper installation of chamfering rings.
Korrekte Montage des Fasrings.

