

**IZELTAS®**

# LOKMA VE BİJON ANAHTARLARI

## SOCKETS AND RIM WRENCHES

Lokma Anahtarlar  
Socket Wrenches

Lokma Takımları  
Socket Wrench Sets

Kovan Anahtarlar  
Tubular Socket Wrenches

Bijon Anahtarlar  
Rim Wrenches

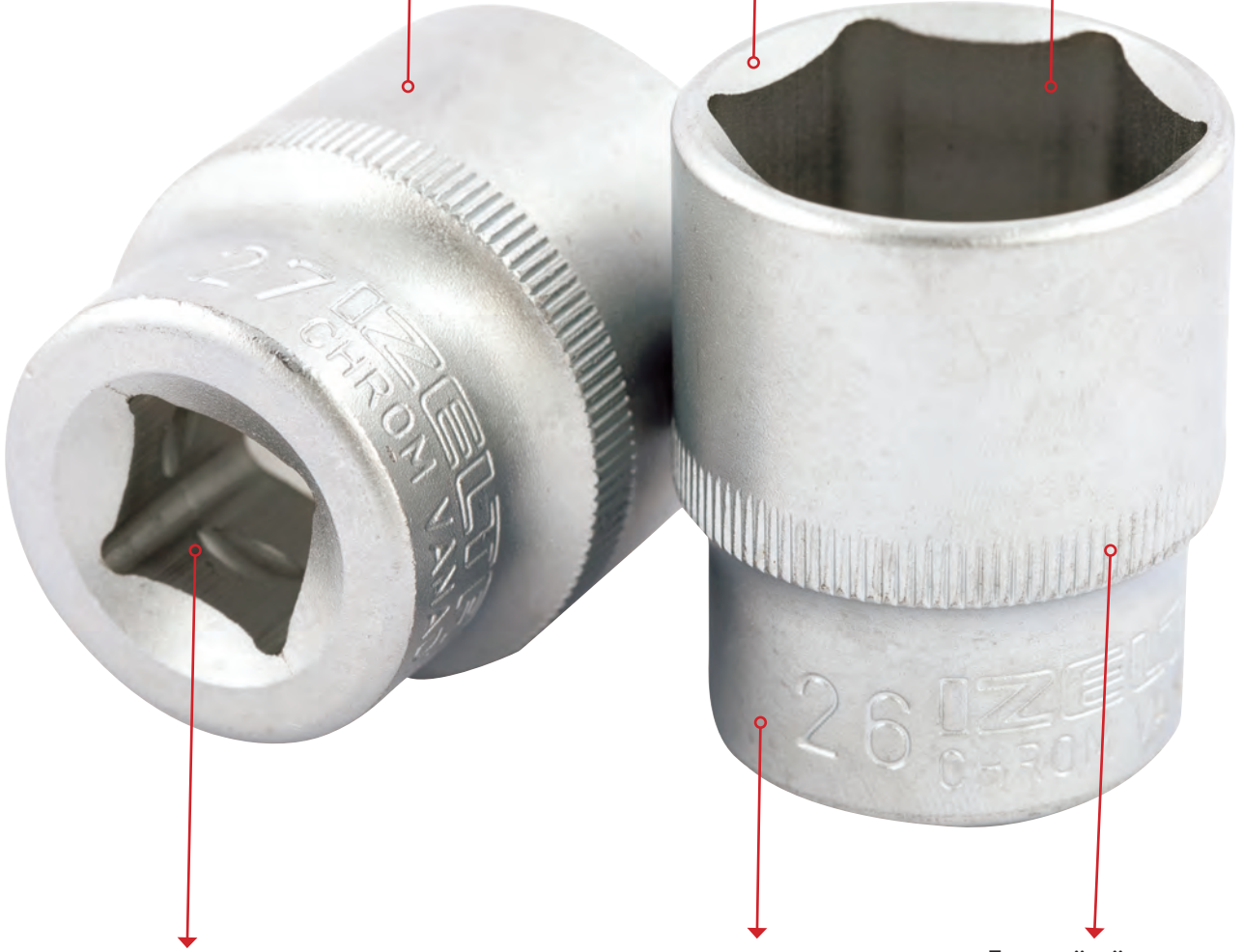
Tork Anahtarları  
Torque Wrenches



Nikel üzeri krom kaplama ile korozyon direncinde üst seviye koruma  
Corrosion protection with nickel over chrome plating

Yüksek dayanım için üst toleranslarda tasarım  
Improved durability with upper tolerance thickness

En uygun temas yüzeyi için hassas dövülmüş altı köşe ağızlar  
Precise forged hex shape for best contact area



Bilya stoplama yuvalı hassas işlenmiş kare kanal  
Precise machined square adapter with ball stopper  
Groove

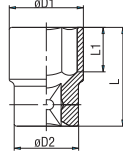
Yüksek mukavemetli alaşımlı sıcak dövme çeliği  
High strength alloyed forged steel

Extra sürtünme kabiliyeti için tırtıklı tasarım  
Extra friction capability with knurled design

## 1107

1/4" Altı Köşe Lokma Anahtar (mm)  
Socket Wrench 6 Points (mm)

TS ISO 2725 -1  
DIN 3124



1/4"

Krom vanadyum, Krom kaplı, Polisajlı  
Chrom vanadium, Chrom plated, Polished

KOD CODE	mm	ø D1 mm	ø D2 mm	L mm	L1 mm	g	TL/Ad.	
1107 06 0004	4	6.8	11.8	24.5	4	10	10	4,05
1107 06 0045	4.5	7.4	11.8	24.5	5	10	10	4,05
1107 06 0005	5	8	11.8	24.5	6	10	10	4,05
1107 06 0055	5.5	8.7	11.8	24.5	6	10	10	4,05
1107 06 0006	6	9.2	11.8	24.5	7	10	10	4,05
1107 06 0007	7	10.3	11.8	24.5	7	10	10	4,05
1107 06 0008	8	11.4	11.8	24.5	8	10	10	4,05
1107 06 0009	9	12.9	12.2	24.5	8	15	10	4,30
1107 06 0010	10	14.3	13	24.5	9	20	10	4,30
1107 06 0011	11	15.8	14.2	24.5	9	20	10	5,45
1107 06 0012	12	16.8	15.5	24.5	9	25	10	5,45
1107 06 0013	13	17.8	16.5	24.5	9	30	10	6,05

## 1207

1/4" Sekiz Köşe Lokma Anahtar (mm)  
Socket Wrench 8 Points (mm)

TS ISO 2725 -1  
DIN 3124



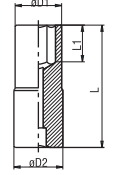
1/4"

Krom vanadyum, Krom kaplı, Polisajlı  
Chrom vanadium, Chrom plated, Polished

KOD CODE	mm	ø D1 mm	ø D2 mm	L mm	g	TL/Ad.	
★1207 06 8008	8	12.2	12.2	24.5	15	10	6,50
★1207 06 8010	10	14.7	14.7	24.5	25	10	7,65

## 1107

1/4" Altı Köşe Derin Lokma Anahtar (mm)  
Deep Socket Wrench 6 Points (mm)



1/4"

Krom vanadyum, Krom kaplı, Polisajlı  
Chrom vanadium, Chrom Plated, Polished

KOD CODE	mm	ø D1 mm	ø D2 mm	L mm	L1 mm	g	TL/Ad.	
1107 06 4004	4	6.8	11.8	50	6	10	10	8,00
1107 06 4005	5	8	11.8	50	7	20	10	8,00
1107 06 4055	5.5	8.7	11.8	50	9	20	10	8,00
1107 06 4006	6	9.2	11.8	50	9	25	10	8,95
1107 06 4007	7	10.3	11.8	50	15	25	10	8,95
1107 06 4008	8	11.8	11.8	50	15	25	10	8,95
1107 06 4009	9	13	13	50	15	30	10	8,95
1107 06 4010	10	14.5	14.5	50	15	40	10	8,95
1107 06 4011	11	15.8	15.8	50	21	45	10	9,65
1107 06 4012	12	16.8	16.8	50	21	50	10	9,65
1107 06 4013	13	17.8	17.8	50	21	55	10	9,65

## 1107

1/4" Derin Lokma Anahtar Takımı (14 parça, mm)  
Socket Wrench Set Long Type (14 pcs, mm)



1/4"

KOD CODE	LOKMA LAR Sockets	AVADANLILIKLAR Accessories	g	TL/Ad.	
1107 00 6014	4-5-5.5-6 7-8-9-10 11-12-13 Altı Köşe Derin Lokma Deep Socket Wrench 6 Points	1/4" Cırcır Kol Ratchet Handle 1/4" Ara Kol Extension Bar 50 mm 1/4" Ara Kol Extension Bar 100 mm	1005	14	204,45

Havali aletler ile kullanmayınız / Do not use with power-tools

**1107**

**1/4" Lokmalı Allen Uç**  
*Hexagonal Bit Socket Wrench*



**1/4"**

**Krom vanadyum, Krom Kaplı**  
*Chrom vanadium, Chrom Plated*

KOD CODE	mm	L mm	g		TL/Ad.
1107 06 1125	2.5	37	13	10	6,65
1107 06 1103	3	37	13	10	6,65
1107 06 1104	4	37	15	10	6,65
1107 06 1105	5	37	15	10	6,65
1107 06 1106	6	37	15	10	6,65
1107 06 1107	7	37	16	10	7,85
1107 06 1108	8	37	17	10	7,85
1107 06 1110	10	37	19	10	9,45

**1107**

**1/4" Lokmalı Star Delikli (Torx®) Uç**  
*Tamper Resistant Torx Bit Socket Wrench*



**1/4"**

**Krom vanadyum, Krom Kaplı**  
*Chrom vanadium, Chrom Plated*

KOD CODE		L mm	g		TL/Ad.
1107 06 1308	TR8	37	13	10	8,00
1107 06 1309	TR9	37	13	10	8,00
1107 06 1310	TR10	37	13	10	8,00
1107 06 1315	TR15	37	14	10	8,00
1107 06 1320	TR20	37	14	10	8,00
1107 06 1325	TR25	37	14	10	8,00
1107 06 1327	TR27	37	14	10	8,00
1107 06 1330	TR30	37	15	10	8,00
1107 06 1340	TR40	37	16	10	9,35

**1107**

**1/4" Lokmalı Star (Torx®) Uç**  
*Torx Bit Socket Wrench*



**1/4"**

**Krom vanadyum, Krom Kaplı**  
*Chrom vanadium, Chrom Plated*

KOD CODE		L mm	g		TL/Ad.
1107 06 1208	T8	37	12	10	6,85
1107 06 1209	T9	37	12	10	6,85
1107 06 1210	T10	37	13	10	6,85
1107 06 1215	T15	37	14	10	6,85
1107 06 1220	T20	37	14	10	6,85
1107 06 1225	T25	37	14	10	6,85
1107 06 1227	T27	37	14	10	6,85
1107 06 1230	T30	37	15	10	6,85
1107 06 1240	T40	37	16	10	6,85

**1107**

**1/4" Lokma Düz Uç**  
*Slotted Bit Socket Wrench*



**1/4"**

**Krom vanadyum, Krom Kaplı**  
*Chrom vanadium, Chrom Plated*

KOD CODE		L mm	g		TL/Ad.
1107 06 1403	3	37	13	10	6,65
1107 06 1435	3.5	37	14	10	6,65
1107 06 1404	4	37	14	10	6,65
1107 06 1445	4.5	37	14	10	6,65
1107 06 1455	5.5	37	15	10	6,65
1107 06 1465	6.5	37	15	10	6,65
1107 06 1407	7	37	16	10	6,65
1107 06 1408	8	37	16	10	8,05
1107 06 1410	10	37	17	10	8,70

**1107**

1/4" Lokmalı Yıldız Uç  
Phillips Bit Socket Wrench


**1/4"**

Krom vanadyum, Krom Kaplı  
Chrom vanadium, Chrom Plated

KOD CODE	+	L mm	g	□	TL/Ad.
1107 06 1501	Ph 1	37	14	10	6,65
1107 06 1502	Ph 2	37	14	10	6,65
1107 06 1503	Ph 3	37	15	10	6,65
1107 06 1504	Ph 4	37	16	10	6,65

**1107**

1/4" Bits Uçlu Lokma Takımı (42 Parça)  
Bit Socket Wrench Set (42 Pcs)


**1/4"**

KOD CODE	İÇERİK CONTENTS	□	TL/Ad.
1107 00 1042	<b>1/4" Lokmalı Star Torx® Uçlar</b> Torx® Bit Socket T8-T9-T10-T15-T20-T25-T27-T30-T40	42	401,30
	<b>1/4" Lokmalı Star Delikli Torx® Uçlar</b> Tamper Resistant Torx® Bit Socket Wrench TR8-TR9-TR10-TR15-TR20-TR25-TR27 TR30-TR40		
	<b>1/4" Lokmalı Allen Uçlar</b> Hexagonal Bit Socket Wrench 2.5-3-4-5-6-7-8-10		
	<b>1/4" Lokmalı Düz Uç</b> Slotted Bit Socket Wrench 3-3.5-4-4.5-5.5 6.5-7-8-10		
	<b>1/4" Lokmalı Yıldız Uç</b> Phillips Bit Socket Wrench Ph1-Ph2-Ph3-Ph4		
	<b>1/4" Cırcır kolu</b> Ratchet Handle		
	<b>1/4" Ara Kol</b> Extension Bar 100 mm		
	<b>1/4" Lokma Tornavida Adaptörü</b> Spindle Handle		

**1507**

1/4" Cırcır Kolu  
Ratchet Wrench

TS ISO 3315


**1/4"**

Krom vanadyum, Krom kaplı, Polisajlı  
Chrom vanadium, Chrom plated, Polished

KOD CODE	L mm	g	□	TL/Ad.
1507 06 2140	140	140	5	82,75

**1507**

1/4" Ara Kol  
Extension Bar

 TS ISO 1174  
DIN 3123

**1/4"**

Krom vanadyum, Krom kaplı, Polisajlı  
Chrom vanadium, Chrom plated, Polished

KOD CODE	L mm	g	□	TL/Ad.
1507 06 0050	50	25	5	11,50
1507 06 0100	100	45	5	12,50

**1507**

1/4" Mafsal  
Universal Joint

 TS ISO 1174  
DIN 3123

**1/4"**

Krom vanadyum, Krom kaplı, Polisajlı  
Chrom vanadium, Chrom plated, Polished

KOD CODE	L mm	g	□	TL/Ad.
1507 06 0038	38	25	5	21,15

**1507**

1/4" T Kol  
Sliding T - Handle

 TS ISO 3315  
DIN 3122

**1/4"**

Krom vanadyum, Krom kaplı, Polisajlı  
Chrom vanadium, Chrom plated, Polished

KOD CODE	L mm	g	□	TL/Ad.
1507 06 4115	115	45	5	19,25

**1507**

1/4" Lokma Adaptörü  
Adapter

TS ISO 1174  
DIN 3123



**1/4"**

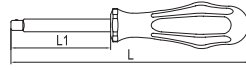
Krom vanadyum, Krom kaplı, Polisajlı  
Chrom vanadium, Chrom plated, Polished

KOD CODE	inch	g		TL/Ad.
1507 06 0004	1/4"Fx3/8"M	20	5	13,85

**1507**

1/4" Derin Lokma Tornavida Adaptörü  
Spindle Handle

DIN 3122



**1/4"**

Krom vanadyum, Krom kaplı, Polisajlı, Selüloz Asetat Saplı  
Chrom vanadium, Chrom plated, Polished, Cellulose Acetate Handle

KOD CODE	L mm	L1 mm	g		TL/Ad.
1507 06 4080	150	65	100	10	22,75

**1107**

1/4" Bits Tutucu Lokma (Mıknatıslı)  
Bit Holder Socket



**1/4"**

Krom vanadyum  
Chrom vanadium

KOD CODE	Inch	g		TL/Ad.
1107 06 5010	1/4"F - 1/4"F	15	5	13,20

**1107**

1/4" Altı Köşe Lokma Anahtar Takımı (15 parça, mm)  
Socket Wrench Set 6 Points (15 pcs, mm)



**1/4"**

KOD CODE	LOKMALAR Sockets	AVADANLIKLAR Accessories	g		TL/Ad.
		<b>1/4" Cırcır kolu</b> Ratchet Handle			
		<b>1/4" Mafsal</b> Universal Joint			
	4 - 5 - 6 7 - 8 - 9 - 10 11 - 12 - 13	<b>1/4" T Kol</b> Sliding T Handle			
1107 00 6015	<b>Altı Köşe</b> Six Points		960	15	192,95
		<b>1/4" Ara Kol</b> Extension Bar 50 mm			
		<b>1/4" Ara Kol</b> Extension Bar 100 mm			

## 1110

### 3/8" Altı Köşe Lokma Anahtar (mm) Socket Wrench 6 Points (mm)

TS ISO 2725 - 1  
DIN 3124



3/8"

Krom vanadyum, Krom kaplı, Polisajlı  
Chrom vanadium, Chrom plated, Polished

KOD CODE	mm	ø D1 mm	ø D2 mm	L mm	L1 mm	g	TL/Ad.
1110 06 0006	6	9.8	17.8	27	9	25	10
1110 06 0007	7	10.8	17.8	27	9	25	10
1110 06 0008	8	12	17.8	27	9	25	10
1110 06 0009	9	13.2	17.8	27	9	25	10
1110 06 0010	10	14.5	17.8	27	9	25	10
1110 06 0011	11	15.8	17.8	27	9	30	10
1110 06 0012	12	16.8	17.8	27	9	30	10
1110 06 0013	13	17.8	16.8	27	9	30	10
1110 06 0014	14	19.6	17.5	29	11	35	10
1110 06 0015	15	20.8	18	29	11	45	10
1110 06 0016	16	21.8	19	29	11	45	10
1110 06 0017	17	23.4	20	29	11	55	10
1110 06 0018	18	24.7	21	29	13	60	10
1110 06 0019	19	25.8	22	29	13	65	10
1110 06 0021	21	27.8	24	32	13	80	10
1110 06 0022	22	29.7	26	32	15	85	10
1110 06 0023	23	29.7	26	32	15	90	10

## 1110

### 3/8" Buji Lokma Anahtar Lastikli Spark Plug Socket with Rubber

TS ISO 2725 - 1



3/8"

Krom vanadyum, Krom kaplı, Polisajlı  
Chrom vanadium, Chrom plated, Polished

KOD CODE	mm	L mm	g	TL/Ad.
1110 06 9208	21	70	145	10

## 1510

### 3/8" Cırcır Kolu Ratchet Handle

TS ISO 3315  
DIN 3122



3/8"

Krom vanadyum, Krom kaplı, Polisajlı  
Chrom vanadium, Chrom plated, Polished

KOD CODE	L mm	g	TL/Ad.
1510 06 0200	200	295	5

## 1510

### 3/8" Ara Kol Extension Bar

TS ISO 1174  
DIN 3123



3/8"

Krom vanadyum, Krom kaplı, Polisajlı  
Chrom vanadium, Chrom plated, Polished

KOD CODE	L mm	g	TL/Ad.
1510 06 0075	75	75	5
1510 06 0150	150	145	5

## 1510

### 3/8" Mafsal Universal Joint

TS ISO 1174  
DIN 3123



3/8"

Krom vanadyum, Krom kaplı, Polisajlı  
Chrom vanadium, Chrom plated, Polished

KOD CODE	L mm	g	TL/Ad.
1510 06 0056	56.5	60	5

Havali aletler ile kullanmayınız / Do not use with power-tools

**1510**

**3/8" T Kol**  
Sliding T - Handle

TS ISO 3315  
DIN 3122



**1110**

**3/8" Altı Köşe Lokma Takımı (19 parça, mm)**  
6 Points Socket Wrench Set (19 Pcs, mm)



3

**3/8"**

**Krom vanadyum, Krom kaplı, Polisajlı**  
Chrom vanadium, Chrom plated, Polished

KOD CODE	L mm	g		TL/Ad.
1510 06 1200	200	180	5	43,15

**1510**

**3/8" Lokma Adaptörü**  
Adapter

TS ISO 1174  
DIN 3123



**3/8"**

**Krom vanadyum, Krom kaplı, Polisajlı**  
Chrom vanadium, Chrom plated, Polished

KOD CODE	inch	g		TL/Ad.
1510 06 0007	3/8"Fx1/2"M	45	5	23,65

**1510**

**3/8" Mafsallı Kol**  
Flexible Handle

TS ISO 3315  
DIN 3122



**3/8"**

**Krom vanadyum, Krom kaplı, Polisajlı**  
Chrom vanadium, Chrom plated, Polished

KOD CODE	L mm	g		TL/Ad.
★1510 06 0215	215	310	5	73,75



**3/8"**

KOD CODE	LOKMARLAR Sockets	AVADANLIKLAR Accessories	g		TL/Ad.
		<b>3/8" Cırcır Kolu</b> Ratchet Handle			
		<b>3/8" Mafsallı</b> Universal Joint			
	6 - 7 - 8 - 9 10 - 11 - 12 13 - 14 - 17 19 - 21 - 23				
	<b>Altı Köşe</b> Six Points	<b>3/8" T Kol</b> Sliding T Handle	1089	19	444,65
1110 00 6019	20.8 <b>Buji Lokma</b> Lastikli <b>Altı Köşe</b> Spark Plug Socket With Rubber	<b>3/8" Ara Kol</b> Extension Bar 75 mm			
		<b>3/8" Ara Kol</b> Extension Bar 150 mm			

Havali aletler ile kullanmayınız / Do not use with power-tools



**1113**

1/2" Lokma Anahtar Sehpası (145 Parça)  
Display Frame for Sockets (145 Pcs)


**1/2"**

KOD CODE	İÇERİK CONTENTS	g		TL/Ad.
	<b>Dolu/Full</b>			
	10-11-12 13-14-15 16-17-18-19 10 adet /10 Pcs			
1113 00 6145		18.236	1	3148,00
	21-22-23 24-26-27 28-30-32 5 Adet / 5 Pcs			

**1113**

1/2" Altı Köşe Lokma Anahtar (mm)  
Socket Wrench 6 Points (mm)

TS ISO 2725 -1  
DIN 3124


**1/2"**

Krom vanadyum, Krom kaplı  
Chrom vanadium, Chrom plated

KOD CODE	mm	Ø D1 mm	Ø D2 mm	L mm	L1 mm	g		TL/ Ad.
1113 06 1008	8	13.2	21.8	38	7	55	10	13,45
1113 06 1009	9	14	21.8	38	7	55	10	13,45
1113 06 1010	10	15	23.3	38	8	55	10	16,75
1113 06 1011	11	16.4	23.3	38	8	60	10	16,75
1113 06 1012	12	17.8	23.3	38	9	60	10	16,75
1113 06 1013	13	19	23.3	38	10	65	10	18,00
1113 06 1014	14	20.4	23.3	38	11	65	10	18,00
1113 06 1015	15	21.6	23.3	38	11	65	10	18,00
1113 06 1016	16	22.9	24	38	11	70	10	18,85
1113 06 1017	17	24	22.5	38	12	70	10	18,85
1113 06 1018	18	25.2	23	38	13	75	10	18,85
1113 06 1019	19	26.8	23	38	13	75	10	19,70
1113 06 1020	20	28	23	38	13	80	10	19,70
1113 06 1021	21	29.2	23	38	13	85	5	19,70
1113 06 1022	22	30.2	24	40	15	95	5	19,70
1113 06 1023	23	31.4	25	40	15	100	5	20,50
1113 06 1024	24	32.6	26	42	17	115	5	20,50
1113 06 1025	25	34	27	42	17	125	5	20,50
1113 06 1026	26	35.3	28	42	17	135	5	20,50
1113 06 1027	27	36.6	28	42	19	140	5	23,55
1113 06 1028	28	37.8	30	42	20	160	5	23,55
1113 06 1029	29	39	30	44	21	170	5	24,80
1113 06 1030	30	40	29.5	44	21	180	5	24,80
1113 06 1032	32	42.5	30	44	23	190	5	25,80

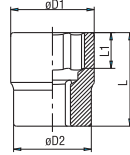


Havali aletler ile kullanmayınız / Do not use with power-tools

**1114**

1/2" On İki Köşe Lokma Anahtar (mm)  
Socket Wrench 12 Points (mm)

TS ISO 2725 - 1  
DIN 3124



**1/2"**

Krom vanadyum, Krom kaplı  
Chrom vanadium, Chrom plated

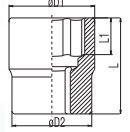
KOD CODE	Ø mm	Ø D1 mm	Ø D2 mm	L mm	L1 mm	g	TL/Ad.
1114 06 1010	10	15	23.3	38	8	60	10
1114 06 1011	11	16.4	23.3	38	8	60	10
1114 06 1012	12	17.8	23.3	38	9	60	10
1114 06 1013	13	19	23.3	38	10	60	10
1114 06 1014	14	20.4	23.3	38	11	60	10
1114 06 1015	15	21.6	23.3	38	11	65	10
1114 06 1016	16	22.9	24	38	11	70	10
1114 06 1017	17	24	22.5	38	12	70	10
1114 06 1018	18	25.2	23	38	13	70	10
1114 06 1019	19	26.8	23	38	13	75	10
1114 06 1020	20	28	23	38	13	80	10
1114 06 1021	21	29.2	23	38	13	80	5
1114 06 1022	22	30.2	24	40	15	95	5
1114 06 1023	23	31.4	25	40	15	100	5
1114 06 1024	24	32.6	26	42	17	105	5
1114 06 1026	26	35.3	28	42	17	135	5
1114 06 1027	27	36.6	28	42	19	135	5
1114 06 1028	28	37.8	30	42	20	155	5
1114 06 1030	30	40	30	44	21	165	5
1114 06 1032	32	42.5	30	44	23	180	5



Havali aletler ile kullanmayınız / Do not use with power-tools

**1413**

1/2" On İki Köşe Lokma Anahtar (SAE)  
Socket Wrench 12 Points (SAE)



**1/2"**

Krom vanadyum, Krom kaplı  
Chrom vanadium, Chrom plated

KOD CODE	Ø inch	Ø D1 mm	Ø D2 mm	L mm	L1 mm	g	TL/Ad.
1413 06 1008	5/16"	13.2	21.8	37	6	45	10
1413 06 1095	3/8"	15	21.8	37	8	50	10
1413 06 1010	7/16"	16.4	23.3	37	9	60	10
1413 06 1011	15/32"	18	23.3	37	9	60	10
1413 06 1012	1/2"	19	23.3	37	9	60	10
1413 06 1013	9/16"	20.4	23.3	37	11	60	10
1413 06 1014	19/32"	21.6	23.3	37	11	65	10
1413 06 1015	5/8"	23.1	22	38	11	70	10
1413 06 1016	11/16"	24.5	22.5	38	11	70	10
1413 06 1017	3/4"	26.8	23	38	13	75	10
1413 06 1020	25/32"	28	23	38	13	75	10
1413 06 1021	13/16"	28.6	23	38	13	80	10
1413 06 1022	7/8"	30.2	24	40	15	90	5
1413 06 1024	15/16"	32.6	26	42	17	115	5
1413 06 1025	1"	35	28	42	17	130	5
1413 06 1027	1 1/16"	36.6	28	42	19	135	5
1413 06 1029	1 1/8"	38.8	30	42	19	170	5
1413 06 1030	1 3/16"	40	29.5	44	20	170	5
1413 06 1032	1 1/4"	42.5	30	44	22	185	5

**1113**

1/2" Buji Lokma Anahtar (Lastikli)  
Spark Plug Socket with Rubber



**1/2"**

Krom vanadyum, Krom kaplı, Polisajlı  
Chrom vanadium, Chrom plated, Polished

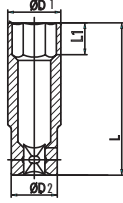
KOD CODE	Ø mm	L mm	g	TL/Ad.
1113 06 9160	16	70	80	10
1113 06 9208	21	70	155	10

(★) İşaretili olan ürünler stoklarla sınırlıdır.  
Limited with stocks.

## 1108

1/2" Altı Köşe Derin Lokma Anahtar (mm)  
Deep Socket Wrench 6 Points (mm)

TS ISO 2725 - 1  
DIN 3124



1/2"

Krom vanadyum, Krom kaplı  
Chrom vanadium, Chrom plated

KOD CODE	Ø mm	ØD1 mm	ØD2 mm	L mm	L1 mm	g	TL/Ad.
1108 06 0010	10	15,5	24	75	6	110	10
1108 06 0011	11	16,7	24	75	7	110	10
1108 06 0012	12	18	24	75	8	110	10
1108 06 0013	13	19,2	24	75	8	120	10
1108 06 0014	14	20,5	24	75	10	120	10
1108 06 0015	15	21,7	24	75	10	140	10
1108 06 0016	16	23	25,5	75	10	140	10
1108 06 0017	17	24,2	25,5	75	10	140	10
1108 06 0018	18	25,5	25,5	75	12	150	10
1108 06 0019	19	26,7	26,7	75	12	150	10

## 1108

1/2" Altı Köşe Derin Lokma Anahtar Takımı (10 parça mm)  
Deep Socket Set (10 pcs. mm)

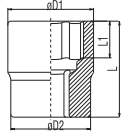


1/2"

KOD CODE	L mm	g	TL/Ad.
1108 00 6010	10-11-12-13-14-15 16-17-18-19	1290	10
			360,30

## 1113

1/2" Star Lokma Anahtar  
Star Socket



1/2"

Krom vanadyum, Krom kaplı  
Chrom vanadium, Chrom plated

KOD CODE	Ø D1 mm	Ø D2 mm	L mm	L1 mm	g	TL/Ad.	
1113 06 0210	E10	13.2	23.8	37	7.5	60	10
1113 06 0212	E12	15	23.8	37	9	65	10
1113 06 0214	E14	16.4	23.8	37	10	65	10
1113 06 0216	E16	18.8	23.8	37	11	70	10
1113 06 0218	E18	20.5	23.8	39	12.5	75	10
1113 06 0220	E20	23	23.8	39	14	75	10

## 1113

1/2" Star (Torx®) Lokma Anahtar Takımı (7 Parça)  
Star Torx® Socket Wrench Set (7 Pcs)



1/2"

KOD CODE	İÇERİK CONTENTS	g	TL/Ad.
1113 00 6007	Star Lokma / Star Socket E10 - E12 - E14 - E16 - E18 - E20 125 mm ara kol / Extension Bar	1075	7
			133,40

**1113**

1/2" Lokmalı Allen Uç  
Hexagonal Bit Socket Wrench



3



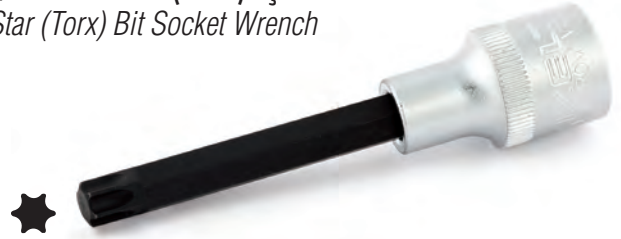
**1/2"**

Krom vanadyum, Krom kaplı  
Chrom vanadium, Chrom plated

KOD CODE	mm	L mm	g		TL/Ad.
1113 06 1105	5	60	70	10	21,75
1113 06 1106	6	60	70	10	21,75
1113 06 1107	7	60	75	10	21,75
1113 06 1108	8	60	75	10	21,75
1113 06 1110	10	60	85	10	24,85
1113 06 1112	12	60	100	10	24,85
1113 06 1114	14	60	115	10	24,85
1113 06 4105	5	100	90	10	22,70
1113 06 4106	6	100	90	10	22,70
1113 06 4107	7	100	90	10	22,70
1113 06 4108	8	100	95	10	22,70
1113 06 4110	10	100	105	10	26,25
1113 06 4112	12	100	145	10	26,25
1113 06 4114	14	100	155	10	31,65
1113 06 4117	17	100	200	10	42,30

**1113**

1/2" Lokmalı Star (Torx®) Uç  
Star (Torx) Bit Socket Wrench



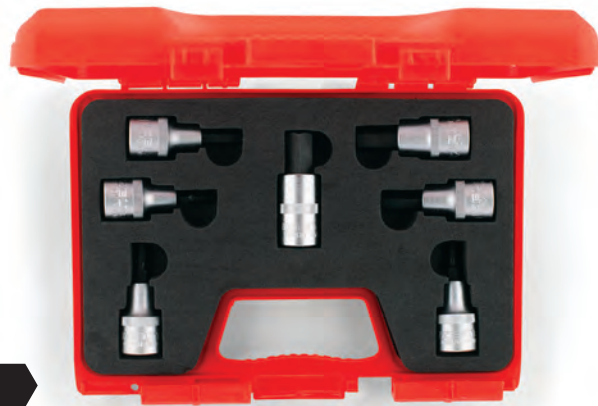
**1/2"**

Krom vanadyum, Krom kaplı  
Chrom vanadium, Chrom plated

KOD CODE	☆	L mm	g		TL/Ad.
1113 06 1220	T20	60	70	10	26,85
1113 06 1225	T25	60	70	10	26,85
1113 06 1227	T27	60	70	10	26,85
1113 06 1230	T30	60	70	10	26,85
1113 06 1240	T40	60	70	10	26,85
1113 06 1245	T45	60	70	10	26,85
1113 06 1250	T50	60	75	10	26,85
1113 06 1255	T55	60	80	10	26,85
1113 06 1260	T60	60	100	10	26,85
1113 06 4220	T20	100	78	10	27,95
1113 06 4225	T25	100	79	10	27,95
1113 06 4227	T27	100	80	10	27,95
1113 06 4230	T30	100	80	10	27,95
1113 06 4240	T40	100	80	10	27,95
1113 06 4245	T45	100	82	10	27,95
1113 06 4250	T50	100	82	10	27,95
1113 06 4255	T55	100	100	10	27,95
1113 06 4260	T60	100	134	10	27,95

**1113**

1/2" Lokmalı Allen Uç Takımı (60 mm, 7 Parça)  
Hexagonal Bits Socket Wrench Set (60 mm, 7 Pcs)

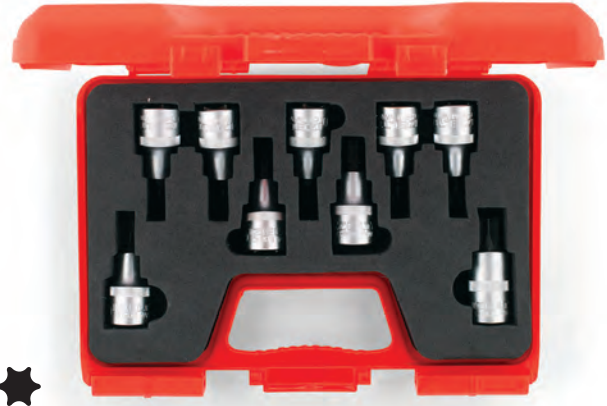


**1/2"**

KOD CODE	İÇERİK CONTENTS	g		TL/Ad.
1113 00 1107	Allen Uçlar 60mm Hex Bit Socket 5-6-7-8-10-12-14	1040	7	161,55

**1113**

1/2" Lokmalı Torx® Uç Takımı (60 mm, 9 parça)  
Torx® Bits Socket Wrench Set (60 mm, 9 Pcs)



**1/2"**

KOD CODE	İÇERİK CONTENTS	g		TL/Ad.
1113 00 6009	Torx® Uçlar 60mm Star Socket T20 - T25 - T27 - T30 - T40 - T45 T50 - T55 - T60	1125	9	241,65

Havali aletler ile kullanmayınız / Do not use with power-tools

**1113**

1/2" Lokmalı Allen Uç ve Star (Torx)® Uç Takımı (17 Parça)  
Hex Bit Sockets - Torx Bit Sockets Set (17 Pcs)


**1/2"**

KOD CODE	İÇERİK CONTENTS		TL/Ad.
1113 00 6017	<b>T Kol (1/2")</b> Sliding T Handle		475,95
	5 - 6 - 7 - 8 - 10 - 12 - 14 <b>Lokmalı Allen Uç</b> 60mm Hex Bit Socket		
	T20 - T25 - T27 T30 - T40 T45 - T50 - T55 - T60 <b>Lokmalı Torx Allen Uç</b> 60mm Torx Bit Socket	17	



Havali aletler ile kullanmayınız / Do not use with power-tools

**1114**

1/2" On İki Köşe Lokmalı Bits Uç Yivli (XZN)  
Hex Bit Socket 12 Points (XZN)


**1/2"**

Krom vanadyum, Krom kaplı  
Chrom vanadium, Chrom plated

**3**

KOD CODE		L mm	g		TL/Ad.
1114 06 4005	M5	60	60	10	18,10
1114 06 4006	M6	60	62	10	18,10
1114 06 4008	M8	60	62	10	18,10
1114 06 4010	M10	60	78	10	18,10
1114 06 4012	M12	60	84	10	21,45
1114 06 4106	M6	80	69	10	22,80
1114 06 4108	M8	80	70	10	22,80
1114 06 4110	M10	80	84	10	25,15
1114 06 4112	M12	80	103	10	26,00
1114 06 4114	M14	80	133	10	27,85
1114 06 4208	M8	140	96	10	25,60
1114 06 4210	M10	140	125	10	31,40
1114 06 4212	M12	140	161	10	35,40
1114 06 4214	M14	140	210	10	39,75
1114 06 4216	M16	140	281	10	57,65

**1114**

1/2" Lokmalı (Ribe) Bits Uç  
Socket Wrench 6 Points


**1/2"**

Krom vanadyum, Krom kaplı  
Chrom vanadium, Chrom plated

KOD CODE		L mm	g		TL/Ad.
1114 06 5004	4	100	75	10	27,15
1114 06 5005	5	100	76	10	27,15
1114 06 5006	6	100	76	10	27,15
1114 06 5007	7	100	77	10	27,15
1114 06 5008	8	100	78	10	27,15
1114 06 5009	9	100	85	10	27,40
1114 06 5010	10	100	96	10	27,40
1114 06 5011	10.5	100	96	10	28,00
1114 06 5012	12	100	121	10	34,90
1114 06 5013	13	100	148	10	38,30
1114 06 5014	14	100	150	10	38,30
1114 06 5016	16	100	198	10	51,85

(★) İşaretili olan ürünler stoklarla sınırlıdır.  
Limited with stocks.

**1513**

1/2" Cırcır Kolu (32 Diş)  
Ratchet Handle

TS ISO 3315  
DIN3122



Krom vanadyum, Krom kaplı  
Chrom vanadium, Chrom plated

**1/2"**

KOD CODE	L mm	g		TL/Ad.
1513 06 0032	250	580	5	137,60

**1513**

1/2" T Kol  
Sliding T - Handle

TS ISO 3315  
DIN 3122



Krom vanadyum, Krom kaplı  
Chrom vanadium, Chrom plated

**1/2"**

KOD CODE	L mm	g		TL/Ad.
1513 06 2250	250	355	5	72,75

3

**1513**

1/2" Cırcır Kolu (72 Diş)  
Max Gear Ratchet Handle

TS ISO 3315



Krom vanadyum, Krom kaplı  
Chrom vanadium, Chrom plated

**1/2"**

KOD CODE	L mm	g		TL/Ad.
★1513 06 0072	250	460	5	243,70

**1513**

1/2" Mafsal  
Universal Joint

TS ISO 1174  
DIN 3123



Krom vanadyum, Krom kaplı  
Chrom vanadium, Chrom plated

**1/2"**

KOD CODE	L mm	g		TL/Ad.
1513 06 4070	70	140	5	54,25

**1513**

1/2" Ara Kol  
Extension Bar

TS ISO 1174  
DIN 3123



Krom vanadyum, Krom kaplı  
Chrom vanadium, Chrom plated

**1/2"**

KOD CODE	L mm	g		TL/Ad.
1513 06 4075	75	140	5	27,25
1513 06 4125	125	215	5	33,25
1513 06 4250	250	420	5	55,75

**1513**

1/2" Lokma Adaptörü  
Adapter

TS ISO 1174  
DIN 3123



Krom vanadyum, Krom kaplı  
Chrom vanadium, Chrom plated

**1/2"**

KOD CODE	inch	g		TL/Ad.
1513 06 0002	1/2"Fx3/8"M	55	5	18,30
1513 06 0003	1/2"Fx3/4"M	115	5	28,85

**1513**

1/2" T Kol Adaptörü  
Adapter



Krom vanadyum, Krom kaplı  
Chrom vanadium, Chrom plated

**1/2"**

KOD CODE	inch	g		TL/Ad.
1513 06 5250	3/8"Fx1/2"M	90	5	31,00

**1113**

1/2" Bits Tutucu Lokma  
Bit Holder Scket



**YENİ  
NEW**

Krom vanadyum  
Chrom vanadium

**1/2"**

KOD CODE	Inch	g		TL/Ad.
1113 06 5010	1/2" F - 1/4" F	50	5	17,70

Havali aletler ile kullanmayınız / Do not use with power-tools

1113 00 1038

1/4" - 1/2" Altı Köşe Lokma Anahtar Takımı ( 35 Parça )  
Socket Wrench Set 6 Point 1/4" - 1/2" ( 35 Pcs )

YENİ  
NEW



3

KOD CODE	LOKMA Sockets	AVADANLIKLAR Accessories	g	TL/Ad.
1113 00 1038	4 - 5 - 6 7 - 8 - 9 - 10 11 - 12 - 13 <b>Altı Köşe</b> Six Points	<b>1/4" Cırcır kolu</b> Ratchet Handle  <b>1/4" Mafsal</b> Universal Joint  <b>1/4" T Kol</b> Sliding T Handle  <b>1/4" Ara Kol</b> Extension Bar 50 mm  <b>1/4" Ara Kol</b> Extension Bar 100 mm  <b>1/2" Cırcır Kolu</b> Ratchet Handle  <b>1/2" T Kol Adaptör</b> Sliding T Handle Adapter  <b>1/2" Ara Kol</b> Extension Bar 75 mm  <b>1/2" Ara Kol</b> Extension Bar 250 mm	4000	35 759,10

Havali aletler ile kullanmayınız / Do not use with power-tools

75

(\*) İşaretli olan ürünler stoklarla sınırlıdır.  
Limited with stocks.

**1113**

1/2" Altı Köşe Lokma Anahtar Takımı (17 Parça, mm)  
Socket Wrench Set 6 Points (17 pcs, mm)


**3**
**1/2"**

KOD CODE	LOKMALAR Sockets	AVADANLIKLAR Accessories	g	TL/Ad.
1113 00 2017		<b>1/2" Cırcır Kolu</b> Ratchet Handle	2880	17
		<b>1/2" T Kol Adaptör</b> Sliding T Handle Adapter		
	10 - 11 - 12 13 - 14 - 15 17 - 19 - 22 24 - 27 - 30 32	<b>1/2" Mafsal</b> Universal Joint		
		<b>1/2" Ara Kol</b> Extension Bar 250 mm		

**1113**

1/2" Altı Köşe Lokma Anahtar Takımı (24 Parça, mm)  
Socket Wrench Set 6 Points (24 pcs, mm)


**1/2"**

KOD CODE	LOKMALAR Sockets	AVADANLIKLAR Accessories	g	TL/Ad.
1113 00 2024		<b>1/2" Cırcır Kolu</b> Ratchet Handle	3650	24
		<b>1/2" Mafsal</b> Universal Joint		
	10 - 11 - 12 13 - 14 - 15 16 - 17 - 18 19 - 21 - 22 23 - 24 - 26 27 - 28 - 30 32	<b>1/2" T Kol Adaptör</b> Sliding T Handle Adapter		
		<b>1/2" Ara Kol</b> Extension Bar 125 mm		
		<b>1/2" Ara Kol</b> Extension Bar 250 mm		690,95

**1114**

1/2" On İki Köşe Lokma Anahtar Takımı (24 Parça, mm)  
Socket Wrench Set 12 Points (24 pcs, mm)


**1/2"**

KOD CODE	LOKMALAR Sockets	AVADANLIKLAR Accessories	g	TL/Ad.
1114 00 6024		<b>1/2" Cırcır Kolu</b> Ratchet Handle	4150	24
		<b>1/2" Mafsal</b> Universal Joint		
	10 - 11 - 12 13 - 14 - 15 16 - 17 - 18 19 - 21 - 22 23 - 24 - 26 27 - 28 - 30 32	<b>1/2" T Kol Adaptör</b> Sliding T Handle Adapter		
		<b>1/2" Ara Kol</b> Extension Bar 125 mm		
		<b>1/2" Ara Kol</b> Extension Bar 250 mm		717,75

**1413**

1/2" On İki Köşe Lokma Anahtar Takımı (24 parça, SAE)  
Socket Wrench Set 12 Points (24 pcs, SAE)


**1/2"**

KOD CODE	LOKMALAR Sockets	AVADANLIKLAR Accessories	g	TL/Ad.
1413 00 6024		<b>1/2" Cırcır Kolu</b> Ratchet Handle	4150	24
		<b>1/2" Mafsal</b> Universal Joint		
	5/16" - 3/8" 7/16" - 15/32" 1/2" - 9/16" 19/32" - 5/8" 11/16" - 3/4" 25/32" - 13/16" 7/8" - 15/16" 1" - 1 1/16" 1 1/8" - 1 3/16" 1 1/4"	<b>1/2" T Kol Adaptör</b> Sliding T Handle Adapter		
		<b>1/2" Ara Kol</b> Extension Bar 125 mm		
		<b>1/2" Ara Kol</b> Extension Bar 250 mm		766,75



**1113**

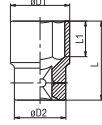
1/2" Manyetik Lokma (mm)  
Socket Wrench 6 Points (mm)

TS ISO 2725 -1  
DIN 3124


**1/2"**

Krom vanadyum, Krom kaplı  
Chrom vanadium, Chrom plated

KOD CODE	mm	Ø D1 mm	Ø D2 mm	L mm	g	TL/Ad.
★1113 06 3008	8	13.2	21.8	38	55	10 16,15
★1113 06 3010	10	15	23.3	38	55	10 23,45
★1113 06 3012	12	17.8	23.3	38	60	10 23,45
★1113 06 3014	14	20.4	23.3	38	65	10 28,60


**1113**

1/2" Manyetik Lokma Allen Uç (mm)  
Magnetic Socket Wrench 6 Points (mm) - Hex Bits


**1/2"**

Krom vanadyum, Krom kaplı  
Chrom vanadium, Chrom plated

KOD CODE	ALLEN UÇLAR HEX BITS	Kullanılan Lokma For Dimensions	g	TL/Ad.
★1113 06 3205	5mm	<b>8mm Manyetik Lokma</b>	12	10 8,70
★1113 06 3206	6mm	<b>Manyetik Lokma</b>	139	10 8,70
★1113 06 3207	7mm	Magnetic Socket Wrench	14	10 8,70
★1113 06 3208	8mm		14	10 9,55
★1113 06 3210	10mm	<b>10mm Manyetik Lokma</b>	24	10 9,80
		Magnetic Socket Wrench		
★1113 06 3212	12mm	<b>12mm Manyetik Lokma</b>	37	10 12,60
		Magnetic Socket Wrench		
★1113 06 3214	14mm	<b>14mm Manyetik Lokma</b>	42	10 14,10
		Magnetic Socket Wrench		

**3**
**1113**

1/2" Manyetik Lokma Torx® Uç  
Magnetic Socket Wrench 6 Points - Torx® Bits


**1/2"**

Krom vanadyum, Krom kaplı  
Chrom vanadium, Chrom plated

KOD CODE	Torx® Uçlar Torx® Bits	Kullanılan Lokma For Dimensions	g	TL/Ad.
★1113 06 3120	T20	<b>8mm Manyetik Lokma</b> Magnetic Socket Wrench	9	10 9,95
★1113 06 3125	T25		9	10 9,95
★1113 06 3127	T27		9	10 9,95
★1113 06 3130	T30		9.4	10 9,95
★1113 06 3140	T40		10.2	10 9,95
★1113 06 3145	T45		11	10 12,10
★1113 06 3150	T50		11.7	10 12,85
★1113 06 3155	T55	<b>10mm Manyetik Lokma</b> Magnetic Socket Wrench	18.2	10 13,85
★1113 06 3160	T60	<b>14mm Manyetik Lokma</b> Magnetic Socket Wrench	31.6	10 15,00

**1113**

1/2" Manyetik Lokmalı Uç Takımı (20 Parça)  
Magnetic Hex Bit Sockets Torx® Bit Sockets Set (20 Pcs)


**1/2"**

KOD CODE	İÇERİK CONTENTS	TL/Ad.
★1113 00 3020	<b>Manyetik Lokma (1/2")</b> Magnetic Socket Wrench 8 - 10 - 12 - 14  <b>Allen Uç</b> Hex Bit Socket 5-6-7-8-10-12-14  <b>Torx® Uç / Torx® Bits</b> T20 - T25 - T27 - T30 - T40 T45 - T50 - T55 - T60	267,35
	20	

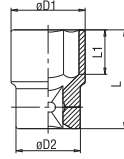
Havali aletler ile kullanmayınız / Do not use with power-tools

(★) İşaretili olan ürünler stoklarla sınırlıdır.  
Limited with stocks.

**1119**

**3/4" Altı Köşe Lokma Anahtar (mm)**  
Socket Wrench 6 Points (mm)

TS ISO 2725 -1  
DIN 3124



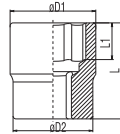
**3/4"**  
Krom vanadyum, Krom kaplı  
Chrom vanadium, Chrom plated

KOD CODE	mm	ø D1 mm	ø D2 mm	L mm	L1 mm	g	TL/Ad.
1119 06 1022	22	33	36	52	16	225	5 39,60
1119 06 1024	24	35	36	52	16	230	5 39,60
1119 06 1027	27	38	36	52	19	235	5 40,90
1119 06 1030	30	42	38	54	21	300	5 44,05
1119 06 1032	32	44	38	56	23	320	5 45,85
1119 06 1034	34	47	42	58	24	400	5 60,50
1119 06 1036	36	50	42	58	25	440	5 60,50
1119 06 1038	38	52	45	60	27	500	5 60,50
1119 06 1041	41	56	45	64	29	580	1 89,00
1119 06 1046	46	62	48	68	33	730	1 94,70
1119 06 1050	50	68	48	72	34	885	1 113,75
1119 06 1055	55	76	48	76	37	1070	1 144,85
1119 06 1060	60	80	48	78	38	1170	1 173,00

**1120**

**3/4" On İki Köşe Lokma Anahtar (mm)**  
Socket Wrench 12 Points (mm)

TS ISO 2725 - 1  
DIN 3124

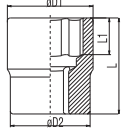


**3/4"**  
Krom vanadyum, Krom kaplı  
Chrom vanadium, Chrom plated

KOD CODE	mm	øD1 mm	øD2 mm	L mm	L1 mm	g	TL/Ad.
1120 06 1022	22	33	36	52	16	220	5 41,85
1120 06 1024	24	35	36	52	17	225	5 41,85
1120 06 1027	27	38	36	52	19	225	5 43,15
1120 06 1030	30	42	38	54	21	285	5 46,50
1120 06 1032	32	44	38	56	23	310	5 48,65
1120 06 1034	34	47	42	57	24	385	5 64,00
1120 06 1036	36	50	42	58	25	435	5 64,00
1120 06 1041	41	56	45	64	29	560	1 94,45
1120 06 1046	46	62	47	68	34	685	1 100,45
1120 06 1050	50	68	48	72	34	840	1 120,25

**1419**

**3/4" On İki Köşe Lokma Anahtar (SAE)**  
Socket Wrench 12 Points (SAE)



**3/4"**

Krom vanadyum, Krom kaplı  
Chrom vanadium, Chrom plated

KOD CODE	inch	øD1 mm	øD2 mm	L mm	L1 mm	g	TL/Ad.
1419 06 1022	7/8"	33	36	52	16	220	5 54,35
1419 06 1024	15/16"	35	36	52	16	220	5 54,35
1419 06 1025	1"	35	36	52	17	220	5 54,60
1419 06 1027	1 1/16"	38	36	52	19	225	5 55,95
1419 06 1028	1 1/8"	40	38	52	19	225	5 55,95
1419 06 1032	1 1/4"	44	38	56	23	315	5 62,90
1419 06 1033	1 5/16"	46	38	56	23	355	5 78,20
1419 06 1035	1 3/8"	48	42	58	25	400	5 78,20
1419 06 1036	1 7/16"	50	42	58	25	425	5 82,00
1419 06 1038	1 1/2"	52	45	60	27	475	5 82,00
1419 06 1041	1 5/8"	56	45	64	29	555	1 121,45
1419 06 1044	1 3/4"	60	47	66	31	660	1 128,25
1419 06 1046	1 13/16"	62	47	68	34	685	1 129,10
1419 06 1047	1 7/8"	64	48	70	34	730	1 154,85
1419 06 1050	2"	68	48	72	34	805	1 155,95

**1519**

**3/4" Cırcır Kolu**  
Ratchet Handle

TS ISO 3315  
DIN 3122



**3/4"**

Krom vanadyum, Krom kaplı  
Chrom vanadium, Chrom plated

KOD CODE	L mm	g	TL/Ad.
1519 06 4510	510	2230	5 385,65

**1519**

**3/4" Ara Kol**  
Extension Bar

TS ISO 1174  
DIN 3123



**3/4"**

Krom vanadyum, Krom kaplı  
Chrom vanadium, Chrom plated

KOD CODE	L mm	g	TL/Ad.
1519 06 4200	200	730	5 113,25
1519 06 4400	400	1370	5 205,20

**1519**

3/4" T Kol  
Sliding T - Handle

TS ISO 3315  
DIN 3122


**3/4"**

Krom vanadyum, Krom kaplı  
Chrom vanadium, Chrom plated

KOD CODE	L mm	g		TL/Ad.
1519 06 4500	500	1485	5	228,35

**1519**

3/4" Lokma Adaptörü  
Adapter

TS ISO 1174  
DIN 3123


**3/4"**

Krom vanadyum, Krom kaplı  
Chrom vanadium, Chrom plated

KOD CODE	inch	g		TL/Ad.
1519 06 0008	3/4"Fx1/2"M	140	5	48,55
1519 06 0001	3/4"Fx1"M	300	5	65,65

**1119**

3/4" Altı Köşe Lokma Anahtar Takımı (14 parça, mm)  
Socket Wrench Set 6 Points (14 pcs, mm)


**3/4"**
**3/4"**

KOD CODE	LOKMALAR Sockets	AVADANLIKLAR Accessories	g		TL/Ad.
1119 00 6114	22 - 24 - 27 30 - 32 - 34 36 - 41 - 46 50	3/4" Cırcır Kolu Ratchet Handle 3/4" T Kol Sliding T Handle 3/4" Ara Kol Extension Bar 200 mm 3/4" Ara Kol Extension Bar 400 mm	10180	14	1560,90

**1120**

3/4" On İki Köşe Lokma Anahtar Takımı (14 parça, mm)  
Socket Wrench Set 12 Points (14 pcs, mm)


**3/4"**
**3/4"**

KOD CODE	LOKMALAR Sockets	AVADANLIKLAR Accessories	g		TL/Ad.
1120 00 6014	22 - 24 - 27 30 - 32 - 34 36 - 41 - 46 50	3/4" Cırcır Kolu Ratchet Handle 3/4" T Kol Sliding T Handle 3/4" Ara Kol Extension Bar 200 mm 3/4" Ara Kol Extension Bar 400 mm	13700	14	1597,60

**1419**

3/4" On İki Köşe Lokma Takımı (14 parça, SAE)  
Socket Wrench Set 12 Points (14 pcs, SAE)


**3/4"**
**3/4"**

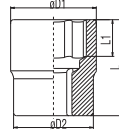
KOD CODE	LOKMALAR Sockets	AVADANLIKLAR Accessories	g		TL/Ad.
1419 00 6114	15/16" - 1 1/6" 1 1/8" - 1 1/4" 1 5/16" 1 3/8" 1 1/2" - 1 5/8" 1 7/8" - 2"	3/4" Cırcır Kolu Ratchet Handle 3/4" T Kol Sliding T Handle 3/4" Ara Kol Extension Bar 200 mm 3/4" Ara Kol Extension Bar 400 mm	10180	14	1832,25

Havallı aletler ile kullanmayınız / Do not use with power-tools

**1225**

1" On İki Köşe Lokma Anahtar (mm)  
Socket Wrench 12 Points (mm)

DIN 3124



1"

Krom vanadyum, Krom kaplı  
Chrom vanadium, Chrom plated

KOD CODE	Ø mm	Ø D1 mm	Ø D2 mm	L mm	L1 mm	g	TL/Ad.
1225 06 0036	36	52	48	65	26	525	1 129,65
1225 06 0041	41	58	50	70	29	665	1 141,15
1225 06 0046	46	65	54	75	32	900	1 171,15
1225 06 0050	50	70	57	75	34	1040	1 202,75
1225 06 0055	55	76	57	83	42	1250	1 260,55
1225 06 0060	60	82	60	87	46	1505	1 337,50

**1525**

1" Lokma Adaptörü  
Adapter

TS ISO 1174  
DIN 3123



1"

Krom vanadyum, Krom kaplı  
Chrom vanadium, Chrom plated

KOD CODE	inch	g	TL/Ad.
1525 06 0005	1"Fx3/4"M	330	5 93,70

**1113**

1/2" Alaşımli Jant Lokma Takımı (3 Parca, mm)  
Combination Lug Nut Socket Set (3 Pcs, mm)



1/2"

KOD CODE	LOKMALAR Sockets	g	TL/Ad.
1113 00 9003	17-19-21	800	3 266,15

**1113**

1/2" Alaşımli Jant Lokma Takımı (7 Parca, mm)  
Combination Lug Nut Socket Set (7 Pcs, mm)



1/2"

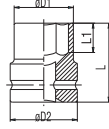
KOD CODE	LOKMALAR Sockets	g	TL/Ad.
★1113 00 9007	17 - 19 - 21 - 22 23 - 24 - 27	2250	7 480,45

Havali aletler ile kullanmayınız / Do not use with power-tools

(★) İşaretli olan ürünler stoklarla sınırlıdır.  
Limited with stocks.

## 1113

### 1/2" Altı Köşe Havalı Lokma Anahtar (mm) Impact Socket Wrench 6 Points (mm)



1/2"

Krom molibden, Fosfat kaplamalı  
Chrom molybdenum, Phosphate finish

KOD CODE	mm	Ø D1 mm	Ø D2 mm	L mm	L1 mm	g	TL/Ad.
1113 06 7010	10	17	25	38	8	70	10
1113 06 7011	11	18	25	38	8	70	10
1113 06 7012	12	19	25	38	9	70	10
1113 06 7013	13	20	25	38	10	70	10
1113 06 7014	14	22	25	38	10	75	10
1113 06 7015	15	23	30	38	11	110	10
1113 06 7016	16	24	30	38	11	110	10
1113 06 7017	17	26	30	38	12	115	10
1113 06 7018	18	27	30	38	13	115	10
1113 06 7019	19	28	30	38	13	120	10
1113 06 7021	21	30	30	40	14	125	5
1113 06 7022	22	32	30	40	14	145	5
1113 06 7024	24	34	30	42	15	150	5
1113 06 7027	27	38	30	44	16	175	5

## 1513

### 1/2" Havalı Lokma Ara Kol Impact Socket Extension Bar



1/2"

Krom molibden, Fosfat kaplamalı  
Chrom molybdenum, Phosphate finish

KOD CODE	L mm	g	TL/Ad.
1513 06 7125	125	275	5
★1513 06 7250	250	450	5

## 1108

### 1/2" Altı Köşe Havalı Derin Lokma Anahtar (mm) 6 Point Impact Socket Wrench, Long Type (mm)



1/2"



Krom molibden, Fosfat kaplamalı  
Chrom molybdenum, Phosphate finish

3

KOD CODE	mm	L mm	g	TL/Ad.
1108 06 7010	10	80	136	10
1108 06 7011	11	80	144	10
1108 06 7012	12	80	157	10
1108 06 7013	13	80	157	10
1108 06 7014	14	80	172	10
1108 06 7015	15	80	223	10
1108 06 7016	16	80	230	10
1108 06 7017	17	80	240	10
1108 06 7018	18	80	255	10
1108 06 7019	19	80	236	10
1108 06 7021	21	80	240	10
1108 06 7022	22	80	296	5
1108 06 7024	24	80	308	5
1108 06 7027	27	80	356	5
1108 06 7030	30	80	416	5
1108 06 7032	32	80	510	5

## 1513

### 1/2" Havalı Lokma Adaptörü Impact Socket Adapter



1/2"

Krom molibden, Fosfat kaplamalı  
Chrom molybdenum, Phosphate finish

KOD CODE	inch	g	TL/Ad.
1513 06 7002	1/2"Fx3/8"M	95	5
1513 06 7003	1/2"Fx3/4"M	175	5

## 1513

### 1/2" Havalı Lokma Mafsal Impact Socket Universal Joint



1/2"

Krom molibden, Fosfat kaplamalı  
Chrom molybdenum, Phosphate finish

KOD CODE	L mm	g	TL/Ad.
1513 06 7075	75	220	5

**1119**

**3/4" Altı Köşe Havalı Lokma Anahtar (mm)**  
Impact Socket Wrench 6 Points (mm)



**3**

**3/4"**

**Krom molibden, Fosfat kaplamalı**  
Chrom molybdenum, Phosphate finish

KOD CODE	mm	β D1 mm	β D2 mm	L mm	L1 mm	g	TL/Ad.
1119 06 7019	19	32	44	50	13	330	5 58,05
1119 06 7021	21	35	44	50	15	340	5 58,05
1119 06 7022	22	36	44	50	15	345	5 58,05
1119 06 7024	24	38	44	50	16	350	5 58,05
1119 06 7027	27	42	44	53	17	380	5 59,70
1119 06 7030	30	46	44	53	20	410	1 64,35
1119 06 7032	32	48	44	57	20	460	1 64,35
1119 06 7034	34	51	44	57	22	490	1 83,95
1119 06 7036	36	53	44	57	22	520	1 83,95
1119 06 7041	41	59	44	58	24	580	1 129,55
1119 06 7046	46	66	44	62	24	715	1 137,70

**1519**

**3/4" Havalı Lokma Ara Kol**  
Impact Socket Extension Bar



**3/4"**

**Krom molibden, Fosfat kaplamalı**  
Chrom molybdenum, Phosphate finish

KOD CODE	L mm	g	TL/Ad.
1519 06 7175	175	865	5 177,35
1519 06 7250	250	1155	5 253,60
1519 06 7330	330	1425	5 384,85

**1519**

**3/4" Havalı Lokma Mafsal**  
Impact Socket Universal Joint



**3/4"**

**Krom molibden, Fosfat kaplamalı**  
Chrom molybdenum, Phosphate finish

KOD CODE	L mm	g	TL/Ad.
1519 06 7108	108	735	5 295,40

**1519**

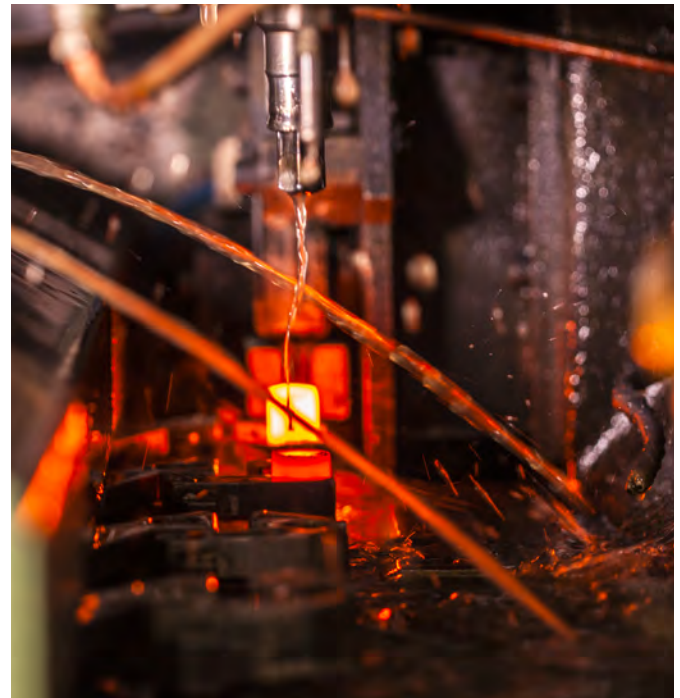
**3/4" Havalı Lokma Adaptörü**  
Impact Socket Adapter



**3/4"**

**Krom molibden, Fosfat kaplamalı**  
Chrom molybdenum, Phosphate finish

KOD CODE	inch	g	TL/Ad.
1519 06 7011	3/4"Fx1/2"M	315	5 78,70

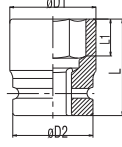


## 1125

### 1" Altı Köşe Havalı Lokma Anahtar (mm) Impact Socket Wrench 6 Points (mm)



1"



Krom molibden, Fosfat kaplamalı  
Chrom molybdenum, Phosphate finish

KOD CODE	mm	β D1 mm	β D2 mm	L mm	L1 mm	g		TL/Ad.
1125 06 7024	24	41	54	58	17	560	1	109,35
1125 06 7027	27	44	54	58	19	565	1	110,35
1125 06 7030	30	48	54	60	21	605	1	111,25
1125 06 7032	32	51	54	62	21	650	1	112,55
1125 06 7033	33	52	54	62	21	660	1	112,55
1125 06 7034	34	53	54	62	24	765	1	113,15
1125 06 7036	36	56	54	65	24	720	1	113,70
1125 06 7038	38	58	54	65	26	735	1	118,40
1125 06 7041	41	61	54	70	28	845	1	127,00
1125 06 7046	46	68	54	75	30	1075	1	145,95
1125 06 7050	50	73	54	75	32	1170	1	162,40
1125 06 7055	55	79	54	83	37	1435	1	225,15
1125 06 7060	60	86	54	87	37	1760	1	281,45

## 1525

### 1" Havalı Lokma Mafsal Impact Socket Universal Joint



3

1"

Krom molibden, Fosfat kaplamalı  
Chrom molybdenum, Phosphate finish

KOD CODE	L mm	g		TL/Ad.
1525 06 7128	128	1530	1	603,20

## 1525

### 1" Havalı Lokma Ara Kol Impact Socket Extension Bar



1"

Krom molibden, Fosfat kaplamalı  
Chrom molybdenum, Phosphate finish

KOD CODE	L mm	g		TL/Ad.
1525 06 7175	175	1395	5	322,75
1525 06 7250	250	1890	5	415,05
1525 06 7330	330	2455	5	503,90

## 1525

### 1" Havalı Lokma Adaptörü Impact Socket Adapter



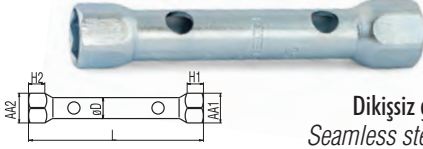
1"

Krom molibden, Fosfat kaplamalı  
Chrom molybdenum, Phosphate finish

KOD CODE	inch	g		TL/Ad.
1525 06 7015	1"Fx3/4"M	560	5	123,70



**1800**
**Kovan Anahtar İki Ağız (mm)**  
*Double Ended Tubular Socket Wrench (mm)*

 TS ISO 3793  
 DIN 896

 Dikişsiz çelik boru, Çinko kaplı  
*Seamless steel tube, Zinc plated*
**3**

KOD CODE	mm	L mm	AA1 mm	AA2 mm	H1 mm	H2 mm	g	TL/Ad.	
1800 07 0607	6x7	105	8.6	9.6	7	8	25	5	19,75
1800 07 0809	8x9	105	11.2	12.2	9	10	35	5	21,70
1800 07 1011	10x11	120	13.6	14.6	11	11.5	55	5	29,80
1800 07 1213	12x13	135	16	17	12	12.5	80	5	31,60
1800 07 1415	14x15	135	18.5	19.5	13	13.5	110	5	34,65
1800 07 1617	16x17	150	21	22	14	14.5	150	5	37,20
1800 07 1819	18x19	150	23	24	15	15.5	170	5	38,55
1800 07 2022	20x22	165	25.4	27.4	16	18	220	5	42,50
★1800 07 2123	21x23	165	26.4	28.4	17	19	240	5	45,80
1800 07 2224	22x24	180	27.4	29.4	18	20	330	5	47,70
★1800 07 2426	24x26	180	30.4	32.4	20	22	340	5	59,40
1800 07 2427	24x27	180	30.4	33.4	20	23	400	5	61,70
★1800 07 2528	25x28	200	31.4	34.4	21	24	400	5	69,95
★1800 07 2732	27x32	200	33.4	38.4	23	26	435	5	81,35

**1800**
**Kovan Anahtar Takımı İki Ağız (mil dahil, mm)**  
*Double Ended Tubular Socket Wrench Set with Tommy Bars (mm)*


KOD CODE	mm	g	TL/Ad.	
1800 00 2108	6x7 - 8x9 - 10x11 - 12x13 - 14x15 16x17 - 18x19 - 20x22 Mil/Handle Bars 5x125-8x180 mm	920	10	276,40

**1841**
**Kovan Anahtar Bir Ağız (mil dahil)**  
*Single Ended Tubular Socket Wrench with Tommy Bar*

 Dikişsiz çelik boru, Çinko kaplı  
*Seamless steel tube, Zinc plated*

KOD CODE	mm		L mm	σD mm	Mil Handle bar mm	g	TL/Ad.	
	mm	inch						
1841 07 0021	21	13/16"	120	20	10x120	215	5	33,40

**1850**
**Kovan Anahtar Mili**  
*Tommy Bar*

 TS ISO 3793  
 DIN 900

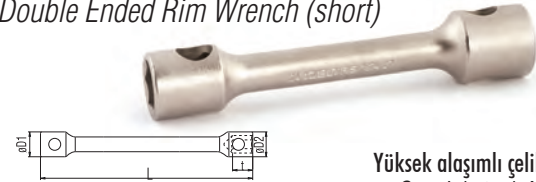

KOD CODE	σDxL mm	g	TL/Ad.	
1850 07 5125	5x125	20	10	8,15
1850 07 8180	8x180	70	10	12,50
1850 07 1120	10x120	75	10	14,15
1850 07 1200	10x200	120	10	16,00

**1870**
**Ağır Tip Bijon Anahtarı İki Ağız Uzun**  
*Double Ended Rim Wrench (long)*

TSEK


 Yüksek alaşımli çelik, Nikel kaplı  
*Special steel, Nickel plated*

KOD CODE	mm	L mm	t mm	σD1 mm	σD2 mm	g	TL/Ad.	
1870 09 2427	24x27	400	34.5	36	40	1135	10	88,10
1870 09 2730	27x30	400	34.5	40	44	1380	10	101,20
1870 09 2732	27x32	400	34.5	40	46	1380	10	101,20
1870 09 3032	30x32	400	34.5	44	46	1380	10	104,75
1870 09 3233	32x33	400	34.5	46	47	1450	10	116,25

**1874**
**Ağır Tip Bijon Anahtarı İki Ağız Kısa**  
*Double Ended Rim Wrench (short)*

 Yüksek alaşımli çelik, Nikel kaplı  
*Special steel, Nickel plated*

KOD CODE	mm	L mm	t mm	σD1 mm	σD2 mm	g	TL/Ad.	
1874 09 2224	22x24	170	34.5	34	36	720	10	55,80
1874 09 2427	24x27	200	34.5	36	40	800	10	71,35

**1850**
**Bijon Anahtar Mili**  
*Tommy Bar*

 TS ISO 3793  
 DIN 900

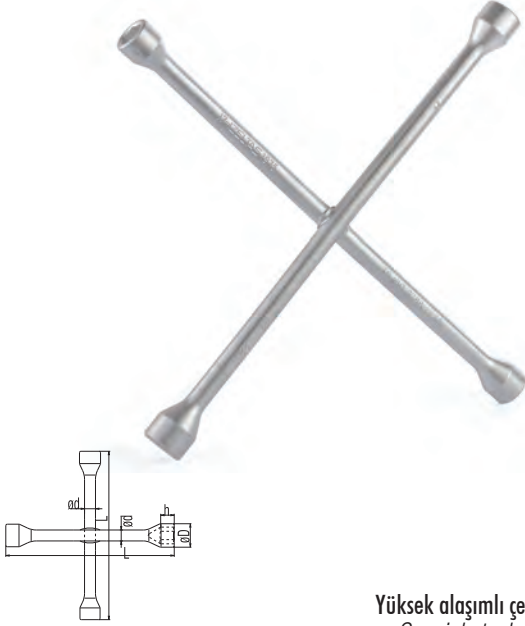

KOD CODE	σDxL mm	g	TL/Ad.	
1850 09 1630	18x630	1260	1	51,25



## 1975

### Bijon Anahtarı İstavroz Tipi Cross Rim Wrench

TS ISO 6788



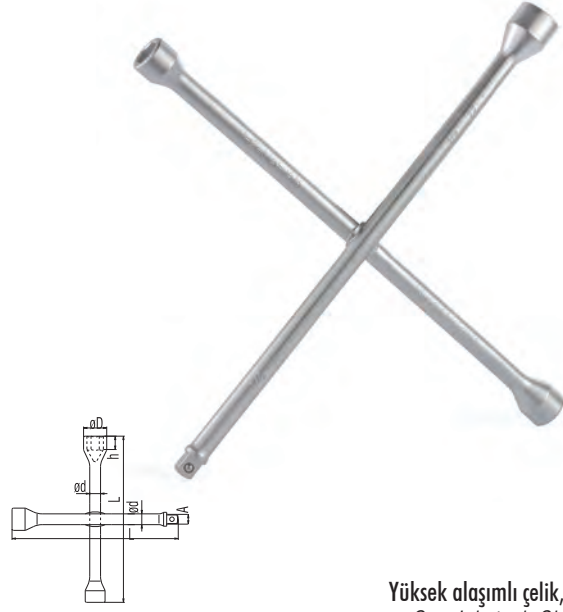
Yüksek alaşımlı çelik, Krom kaplı  
Special steel, Chrom plated

KOD CODE	mm	inch	øD mm	h mm	L mm	ød mm	g	TL/Ad.
	17	11/16"	28	12				
1975 09 1719	19	3/4"	30	14	420	16	1422	10 105,30
	21	13/16"	32	16				
	22	7/8"	34	17				

## 1975

### 1/2" Adaptörlü Bijon Anahtarı İstavroz Tipi Cross Rim Wrench (with 1/2" adapter)

TS ISO 6788



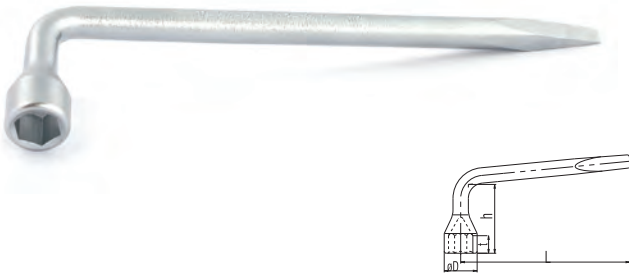
Yüksek alaşımlı çelik, Krom kaplı  
Special steel, Chrom plated

KOD CODE	mm	inch	øD mm	h mm	L mm	A mm	ød mm	g	TL/Ad.
	17	11/16"	28	12					
1975 09 1322	19	3/4"	30	14	420	12.65	16	1375	10 107,20
	22	7/8"	34	17					
		1/2"							

## 1940

### Bijon Anahtarı Pipo Tipi (Tornavida Ağzılı) Offset Socket Wrench with Screwdriver

TSEK



Yüksek alaşımlı çelik, Krom kaplı  
Special steel, Chrom plated

KOD CODE	mm	inch	L mm	øD mm	h mm	g	TL/Ad.
1940 09 0017	17	11/16"	285	28	65	485	10 35,25
1940 09 0019	19	3/4"	285	30	65	470	10 42,30
1940 09 0021	21	13/16"	320	32	85	575	10 52,30



**1840**

1/2" Mafsallı T Kol  
Swivel Handle With Sliding T 1/2"

3



**1/2"**

Özel alaşım çelik, Krom kaplı  
Special steel, Chrom plated

KOD CODE	mm	L mm	g	TL/Ad.
1840 08 0500	1/2"	500	740	10 197,20

**1855**

Mafsallı T Kol Lokma  
T - Handle Wrench with Universal Joint



Özel alaşım çelik, Krom kaplı  
Special steel, Chrom plated

KOD CODE	mm	L mm	g	TL/Ad.
1855 08 0008	8	400	225	10 198,00
1855 08 0010	10	450	405	10 249,00
1855 08 0012	12	450	410	10 249,00
1855 08 0013	13	450	425	10 249,00
1855 08 0017	17	500	485	10 277,40
1855 08 0019	19	510	895	10 352,60

**1845**

Mafsallı Buji Lokma  
Spark Plug Wrench with Universal Joint



Özel alaşım çelik, Krom kaplı  
Special steel, Chrom plated

KOD CODE	mm	L mm	g	TL/Ad.
★1845 08 0160	16	500	525	10 265,35
★1845 08 0208	20.8	520	960	10 322,90

**1857**

T Kol Lokma  
T - Handle Hexagonal Socket Wrench



Özel alaşım çelik, Krom kaplı  
Special steel, Chrom plated

KOD CODE	mm	L mm	g	TL/Ad.
★1857 08 0013	13	260	315	10 109,20
★1857 08 0017	17	280	470	10 139,75

## 1610

3/8" Tork Anahtarı  
Torque Wrench

TS EN ISO 6789-1  
TS EN ISO 6789-2



### 3/8"

KOD CODE	ÖLÇÜ SIZE	L mm	g	TL/Ad.
1610 06 0100	2.5 - 11 Nm - 0.3 - 1.2 Kg	350	515	1 1001,05
1610 06 0300	7 - 33 Nm - 0.5 - 3.4 Kg	450	640	1 1034,95

## 1613

1/2" Tork Anahtarı  
Torque Wrench

TS EN ISO 6789-1  
TS EN ISO 6789-2



### 1/2"

KOD CODE	ÖLÇÜ SIZE	L mm	g	TL/Ad.
1613 06 1200	25 - 135 Nm - 3 - 14 Kg	550	1430	1 1068,80
1613 06 2000	50 - 225 Nm - 5 - 23 Kg	600	2165	1 1103,20
1613 06 3000	70 - 330 Nm - 7 - 35 Kg	800	2870	1 1342,40

## 1619

3/4" Tork Anahtarı  
Torque Wrench

TS EN ISO 6789-1  
TS EN ISO 6789-2



### 3/4"

KOD CODE	ÖLÇÜ SIZE	L mm	g	TL/Ad.
1619 06 2080	200 - 800 Nm-22-82 kg	1050	8860	1 4136,90

## 1607

1/4" Cırcırlı Tork Anahtar  
Torque Wrench With Reversible Ratchet-Head

TS EN ISO 6789-1  
TS EN ISO 6789-2



### 1/4"

KOD CODE	ÖLÇÜ SIZE	L mm	g	TL/Ad.
1607 06 0420	4 - 20 Nm	320	640	1 792,40

## 1610

3/8" Cırcırlı Tork Anahtar  
Torque Wrench With Reversible Ratchet-Head

TS EN ISO 6789-1  
TS EN ISO 6789-2



### 3/8"

KOD CODE	ÖLÇÜ SIZE	L mm	g	TL/Ad.
1610 06 2010	20 -100 Nm	435	1300	1 894,65

## 1613

1/2" Cırcırlı Tork Anahtar  
Torque Wrench With Reversible Ratchet-Head

TS EN ISO 6789-1  
TS EN ISO 6789-2



### 1/2"

KOD CODE	ÖLÇÜ SIZE	L mm	g	TL/Ad.
1613 06 4020	40- 200Nm	510	1590	1 917,00
1613 06 6034	60- 340Nm	610	1810	1 961,35

## 1619

3/4" Cırcırlı Tork Anahtar  
Torque Wrench With Reversible Ratchet-Head

TS EN ISO 6789-1  
TS EN ISO 6789-2



### 3/4"

KOD CODE	ÖLÇÜ SIZE	L mm	g	TL/Ad.
1619 06 1060	100-600 Nm	1050	5600	1 2905,95

3

Lokmayı salmayan bilya tasarımı  
(kare adaptörlü bilyalı tasarım)  
Square adaptor with ball design to  
lock sockets

Değiştirilebilir iç mekanizma  
Inter-changeable inner mechanism

Yüksek dayanım için  
güçlü 32 diş  
32 teeth for high  
endurance

Çift yönlü kullanım  
sağlayan mandal tasarımı  
Bi-directional latch design

Yüksek mukavemetli  
alaşımli sıcak dövme çeliği  
High strength alloyed cold  
work tool steel

Nikel üzerine krom  
kaplama ile korozyon  
direncinde üst seviye koruma  
High corrosion resistance with  
chrome over nickel plating

Dayanımı yüksek sert plastikten ve  
konforlu tutuş sağlayan yumuşak  
elastomer malzemeden imal edilmiş çift  
komponentli ergonomik sap  
Two component ergonomic handle with high  
strength and soft grip plastic

