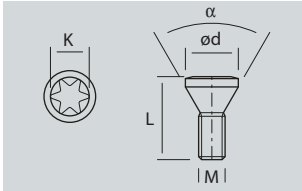


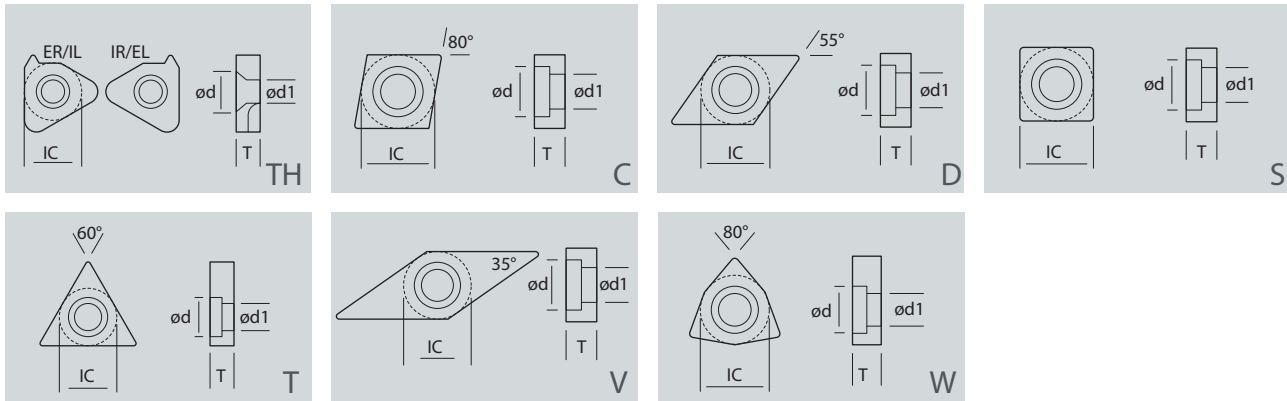
SPARE PARTS/

INSERTS CLAMPING SCREW



DESCRIPTION	d	M	L	α	K	TORQUE (Nm)
ST-SC1804	2.60	M1.8 x 0.40	4.00	60°	T6	0.50
ST-SC0206	2.70	M2.0 x 0.40	6.00	60°	T6	0.50
ST-SC0226	3.10	M2.2 x 0.45	6.00	60°	T7	0.80
ST-SC0257	3.10	M2.5 x 0.45	7.00	60°	T7	0.80
ST-SC0309	4.30	M3.0 x 0.50	9.00	90°	T10	1.40
ST-SC3511	5.30	M3.5 x 0.60	11.0	60°	T15	3.50
ST-SC3514	5.30	M3.5 x 0.60	14.0	60°	T15	3.50
ST-SC3507	5.30	M3.5 x 0.60	7.00	60°	T15	3.50
ST-SC0411	5.50	M4.0 x 0.70	11.0	60°	T15	3.50
ST-SC0416	5.50	M4.0 x 0.70	16.0	60°	T15	3.50
ST-SC0415	5.50	M4.0 x 0.70	15.0	60°	T15	3.50
ST-SC4516	6.20	M4.5 x 0.75	16.0	60°	T15	3.50
ST-SC0513	7.00	M5.0 x 0.80	13.0	60°	T20	4.50
ST-SC0511	7.00	M5.0 x 0.80	11.0	60°	T20	4.50
ST-SC0512	7.00	M5.0 x 0.80	12.0	60°	T20	4.50
ST-SC0616	8.00	M6.0 x 1.00	16.0	60°	T20	4.50
ST-SC0523	7.00	M5.0 x 0.80	23.0	60°	T20	4.50
ST-SC0525	7.00	M5.0 x 0.80	25.0	60°	T20	4.50
ST-SC0630	8.00	M6.0 x 1.00	30.0	60°	T20	4.50
ST-SC6307	8.00	M6.0 x 1.00	30.0	90°	T20	4.50
ST-SC0830	9.50	M8.0 x 1.25	30.0	60°	T20	5.50
ST-SC6301	8.00	M6.0 x 1.00	30.0	90°	T20	4.50
ST-SC420	5.50	M4.0 x 0.70	20.0	60°	T15	3.50
ST-SC512	7.00	M5.0 x 0.80	12.0	60°	T20	4.50
ST-SC625	8.00	M6.0 x 1.00	25.0	60°	T20	4.50
ST-SC8301	9.50	M8.0 x 1.25	30.0	90°	T20	5.50
ST-SC610	8.00	M6.0 x 1.00	10.0	90°	T20	4.50
ST-SC810	9.50	M8.0 x 1.25	10.0	60°	T20	5.50

SHIM



DESCRIPTION	IC	T	Ød	Ød1	INSERT	DRAWING
ST-SHDN11	8.50	3.20	6.60	5.20	DC 11, DN 11	ref. D
ST-SHDN15	12.50	3.20	8.40	6.70	DN 1506	ref. D
ST-SHCN12	12.50	3.20	8.40	6.70	CN 12	ref. C
ST-SHCN16	15.50	4.80	10.80	9.70	CN 16	ref. C
ST-SHCN19	18.70	4.80	13.10	11.20	CN 19	ref. C
ST-SHWN08	12.20	4.80	8.00	7.30	WN 08	ref. W
ST-SHSN12	12.30	4.80	8.00	7.30	SN 12	ref. S
ST-SHSN19	18.70	4.80	13.10	11.20	SN 19	ref. S
ST-SHTN16	9.30	3.20	6.60	5.80	TN 16	ref. T
ST-SHTN22	18.70	4.80	8.00	7.30	TN 22	ref. T
ST-SHVN16	9.20	3.20	6.60	5.80	VN 16	ref. V
ST-SHDC11	8.50	3.20	6.60	5.20	DC 11	ref. D
ST-SHSC09	12.20	4.80	8.00	7.30	SC 09	ref. S
ST-SHSC12	11.40	3.90	8.40	6.70	SC 12	ref. S
ST-SHCC09	8.50	3.20	6.60	5.20	CC 09	ref. C
ST-SHCC12	11.40	3.90	8.40	6.70	CC 12	ref. C
ST-SHVB16	8.20	3.20	6.60	5.40	VB 16	ref. V
ST-SHTC16	9.10	3.20	6.60	4.50	TC 16	ref. T
ST-SHVC16	8.20	3.20	6.60	5.40	VC 16	ref. V
ST-SHKNR/L	11.40	3.20	6.60	7.30	KN 16	ref. K
ST-SHEI16	9.50	3.20	6.00	4.20	16ER/16IR	ref. TH
ST-SHEI22	18.70	4.80	8.00	7.30	22ER/22IR	ref. TH

TURNING

GROOVING

THREADING

MILLING

DRILLING

ENDMILLS

DRILLS

SPARE PARTS

INDEX

TURNING

GROOVING

THREADING

MILLING

DRILLING

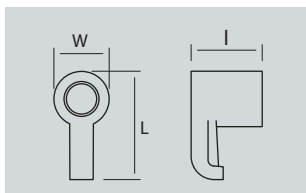
ENDMILLS

DRILLS

SPARE PARTS

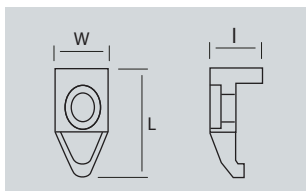
INDEX

CLAMPS (M-STYLE CLAMPING)



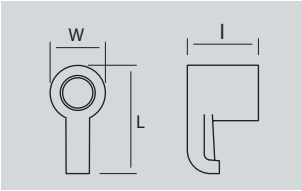
DESCRIPTION	W	L	I			
ST-CS006	9.40	18.20	13.50			
ST-CS007	7.90	16.90	7.90			
ST-CS008	7.75	14.90	10.95			
ST-CS009	9.40	18.20	13.50			

CLAMPS (D-STYLE CLAMPING)



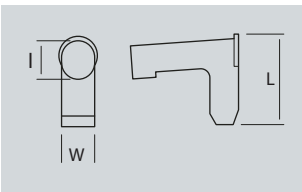
DESCRIPTION	∅d	M	L			
ST-CS001	9.70	M6x1	24.00			
ST-CS002	9.70	M6x1	24.00			
ST-CS003	9.70	M6x1	24.00			
ST-CS004	9.70	M6x1	24.00			
ST-CS004	9.70	M6x1	24.00			

CLAMPS (C-STYLE CLAMPING)



DESCRIPTION	W	L	I			
ST-CS010	9.40	18.20	13.50			
ST-CS011	7.90	16.90	7.90			
ST-CS012	9.40	18.20	13.50			
ST-CS013	7.90	16.90	7.90			

LEVER (P-STYLE CLAMPING)



DESCRIPTION	W	L	I			
ST-LV001	4.75	13.60	4.45			
ST-LV002	4.60	14.50	5.00			
ST-LV003	4.70	14.80	5.10			

TURNING

GROOVING

THREADING

MILLING

DRILLING

ENDMILLS

DRILLS

SPARE PARTS

INDEX

TURNING

GROOVING

THREADING

MILLING

DRILLING

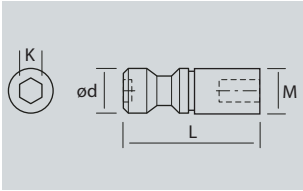
ENDMILLS

DRILLS

SPARE PARTS

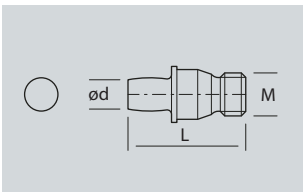
INDEX

LEVER LOCKING SYSTEM (P-STYLE CLAMPING)



DESCRIPTION	d	M	L	K		
ST-SC820	8.00	M8.0 x 1.00	20.0	HEXA 3		
ST-SC822	8.00	M8.0 x 1.00	22.0	HEXA 3		
ST-SC1020	10.00	M10.0 x 1.25	20.0	HEXA 4		
ST-SC1022	10.00	M10.0 x 1.25	22.0	HEXA 4		

ECCENTRIC LOCK PIN (M-STYLE CLAMPING)



DESCRIPTION	M	L	I			
ST-SP001	5.00	17.7	5.00			
ST-SP002	6.00	21.8	6.20			
ST-SP003	4.50	14.0	3.70			